

Amanda Merricks, Oliver Hugh, Jason Gardosi
Perinatal Institute, Birmingham, UK

Objectives

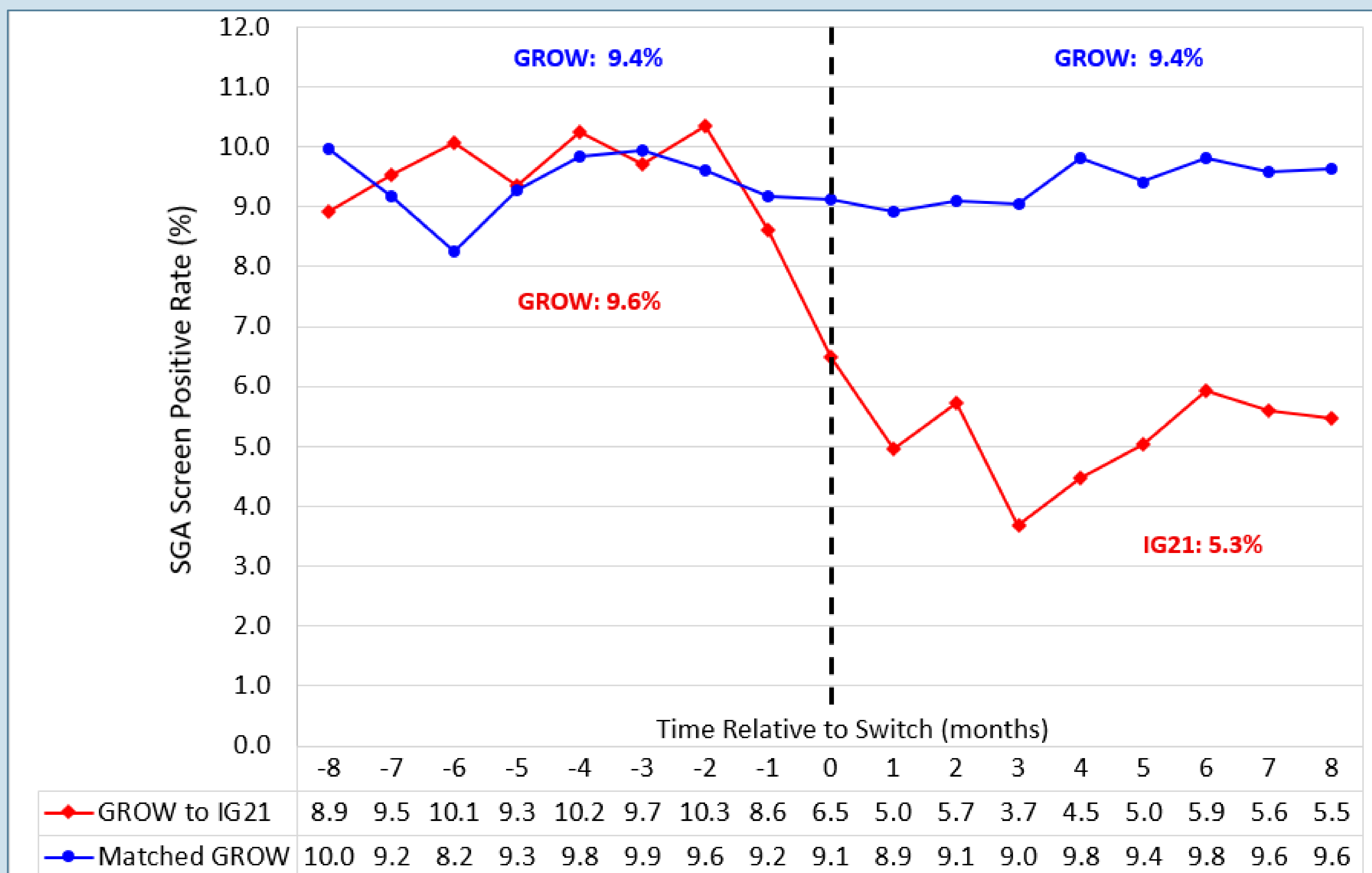
- Since the last RCOG Green Top Guideline ¹, several NHS Trusts switched to INTERGROWTH fetal weight charts ².
- We wanted to assess the effect of their introduction on rate of small-for-gestational age (SGA) fetuses identified antenatally.

Methods

- The analysis was based on units' own reported screen positive SGA rates published in the Maternity Services Monthly Statistics (MSMS) ³
- Switch dates from GROW ⁴ to INTERGROWTH charts ² were confirmed by a national Freedom of Information survey. ⁵
- There were 8 units with complete MSMS data and each was matched with two units of similar birthrate that had continued using GROW.
- Analysis was undertaken using an interrupted time-series logistic regression model with unit-level random intercept, adjusting for the time before and after the switch.

Results

- **FIGURE** →
GROW and INTERGROWTH (IG21) screen positive rates and monthly averages over 8 months of available data pre-and post switch period.
- Rate stayed constant at an average of **9.4%** in matched GROW-continuing units.
- The rate reduced by **45%** with INTERGROWTH, from **9.6%** pre- to **5.3%** post – switch: OR 0.51; 95% CI 0.46 – 0.57 (interrupted time-series analysis).



Conclusion

- The SGA screen positive rate drops immediately by nearly a half with implementation of the INTERGROWTH fetal weight standard, while the matched control group showed no change over the same time period.
- Such a large reduction in antenatal identification of SGA fetuses is likely to lead to missed diagnoses of babies at risk of fetal growth restriction and stillbirth, as previously shown in NHS data ⁶.

References

1. RCOG Green Top Guideline – Fetal growth 2024 <https://doi.org/10.1111/1471-0528.17814>
2. Stirnemann J et al INTERGROWTH-21st 2017 <https://doi.org/10.1002/uog.17347>
3. NHS Digital. Maternity Services Monthly Statistics. 2024. <https://digital.nhs.uk/data-and-information/publications/statistical/maternity-services-monthly-statistics>
4. Perinatal Institute. GROW applications.2025 <https://www.perinatal.org.uk/FetalGrowth/Tools>
5. Corfield S, Devlin J. Recent changes to growth charts in maternity units in England. Lancet Obstet Gynaecol Womens Health in press; <https://ssrn.com/abstract=5722522>
6. Hugh et al. Small-for-gestational age according to INTERGROWTH-21st fetal weight standard misses most pregnancies at risk of stillbirth identified by GROW. UOG 2025 <https://doi.org/10.1002/uog.29214>