



Crystal Court, Aston Cross
Birmingham, B6 5RQ

Telephone 0121 687 3400
Facsimile 0121 687 3401
E-mail: office@pi.nhs.uk
Website: www.pi.nhs.uk

07 November 2007

Perinatal and Infant Mortality Rates - 2006 Update

The enclosed document provides the latest update of the perinatal & infant mortality rates for England & Wales, West Midlands and your PCT:

South Staffordshire PCT

Where the PCT boundary is new, we also include the former constituent PCTs.

The information is derived from

- VSOB data for 2006 from ONS
- Denominator data from ONS
- Data from our Perinatal Death Notifications (PDN) collected regionally. PDN rates can be slightly different due to our ongoing process of ascertainment, and have undergone additional checks on geographical boundaries, postmortems etc.

The analysis includes yearly rates and three-year moving averages, and is summarised for stillbirths, early neonatal deaths and perinatal and infant mortality. This report is also accessible on www.pi.nhs.uk/pnm/.

With sincere regards,

Professor Jason Gardosi
Director, Perinatal Institute

Page 2 Perinatal Death Rates in South Staffordshire PCT, 1997-2006

Perinatal death rates - ONS

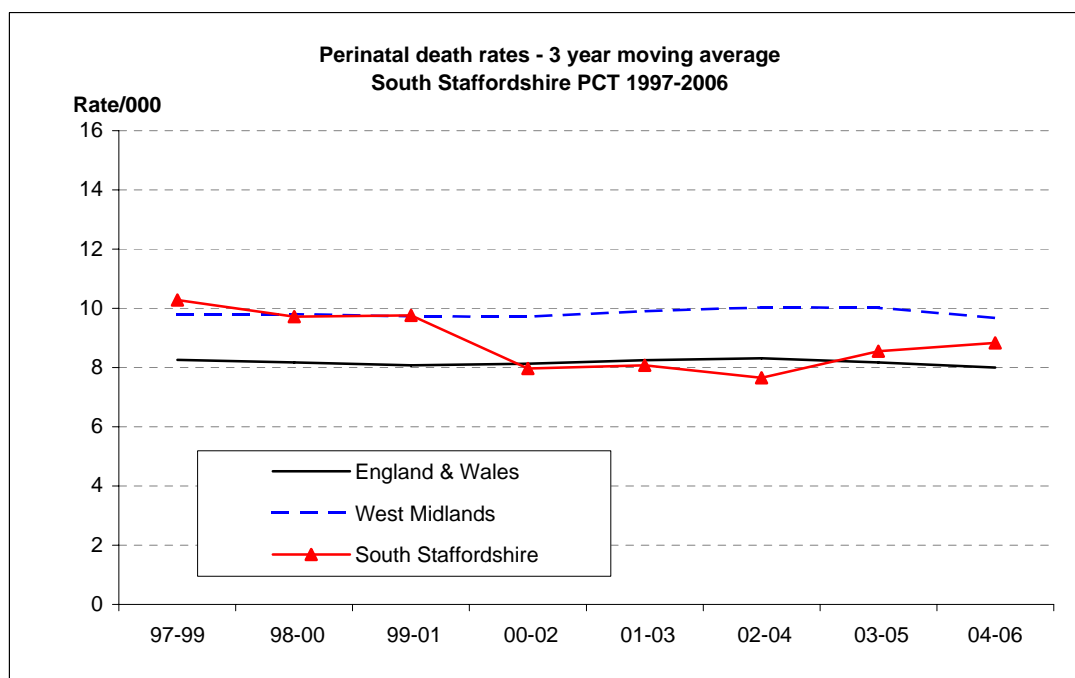
	2002	2003	2004	2005	2006
England & Wales	8.3	8.5	8.1	7.9	7.9
West Midlands	10.1	10.1	9.5	9.9	9.2
South Staffordshire	7.3	8.4	7.0	9.6	9.3

Perinatal death rates - PDN (England & Wales - ONS)

	1997	1998	1999	2000	2001	2002	2003	2004	2005	2006
England & Wales	8.4	8.2	8.2	8.1	7.9	8.3	8.5	8.1	7.9	7.9
West Midlands	9.8	9.5	10.2	9.8	9.2	10.2	10.3	9.6	10.1	9.3
South Staffordshire	10.0	8.8	12.2	8.1	8.8	6.9	8.4	7.6	9.6	9.3

Perinatal death rates - 3 year moving average - PDN (England & Wales - ONS)

	97-99	98-00	99-01	00-02	01-03	02-04	03-05	04-06
England & Wales	8.3	8.2	8.1	8.1	8.2	8.3	8.2	8.0
West Midlands	9.8	9.8	9.7	9.7	9.9	10.0	10.0	9.7
South Staffordshire	10.3	9.7	9.8	8.0	8.1	7.7	8.5	8.8



Note

1 Prior to 2002, PCT areas have been back-projected using postcodes (PDN)

Page 3 Infant Death Rates in South Staffordshire PCT, 1997-2006

Infant death rates - ONS

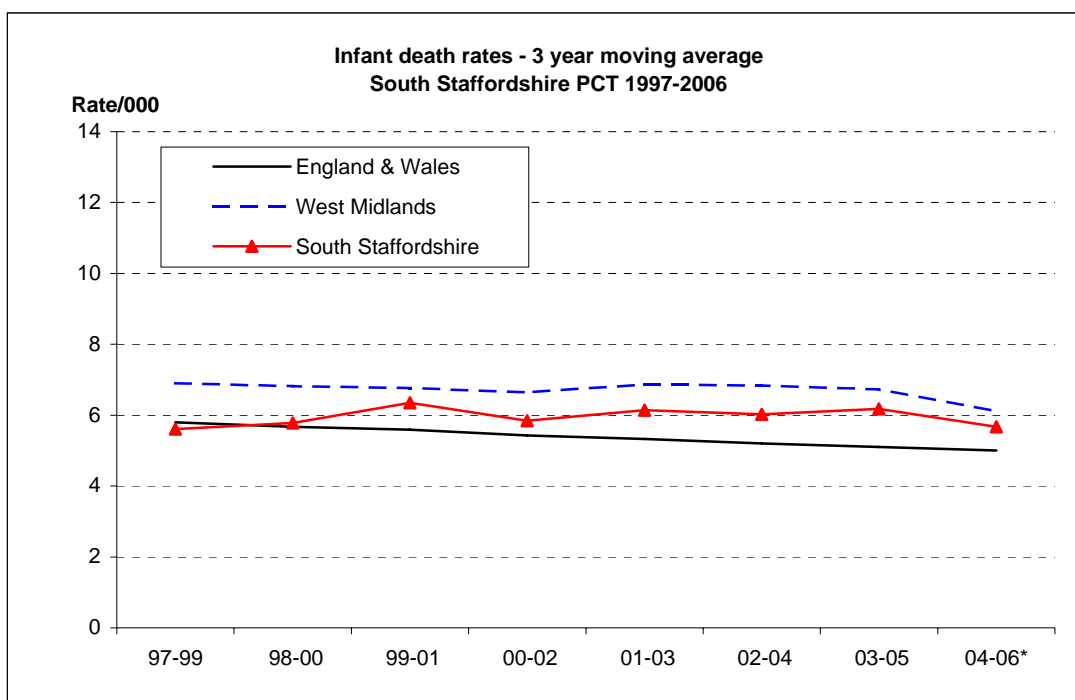
	2002	2003	2004	2005	2006
England & Wales	5.3	5.3	5.1	5.0	5.0
West Midlands	6.5	7.3	6.8	6.4	6.4
South Staffordshire	4.9	8.0	4.8	5.8	6.1

Infant death rates - PDN (England & Wales - ONS)

	1997	1998	1999	2000	2001	2002	2003	2004	2005	2006*
England & Wales	6.0	5.7	5.8	5.6	5.4	5.3	5.3	5.1	5.0	5.0
West Midlands	7.1	6.6	7.0	6.8	6.4	6.7	7.5	6.4	6.4	5.6
South Staffordshire	6.1	3.9	6.9	6.7	5.4	5.4	7.5	5.1	5.9	6.0

Infant death rates - 3 year moving average - PDN (England & Wales - ONS)

	97-99	98-00	99-01	00-02	01-03	02-04	03-05	04-06*
England & Wales	5.8	5.7	5.6	5.4	5.3	5.2	5.1	5.0
West Midlands	6.9	6.8	6.8	6.6	6.9	6.8	6.7	6.1
South Staffordshire	5.6	5.8	6.4	5.8	6.1	6.0	6.2	5.7



Notes

- 1 * Post neonatal (and therefore infant) deaths are not necessarily complete for 2006
- 2 Prior to 2002, PCT areas have been back-projected using postcodes (PDN)

Page 4 Stillbirth Rates in South Staffordshire PCT, 1997-2006

Stillbirth rates - ONS

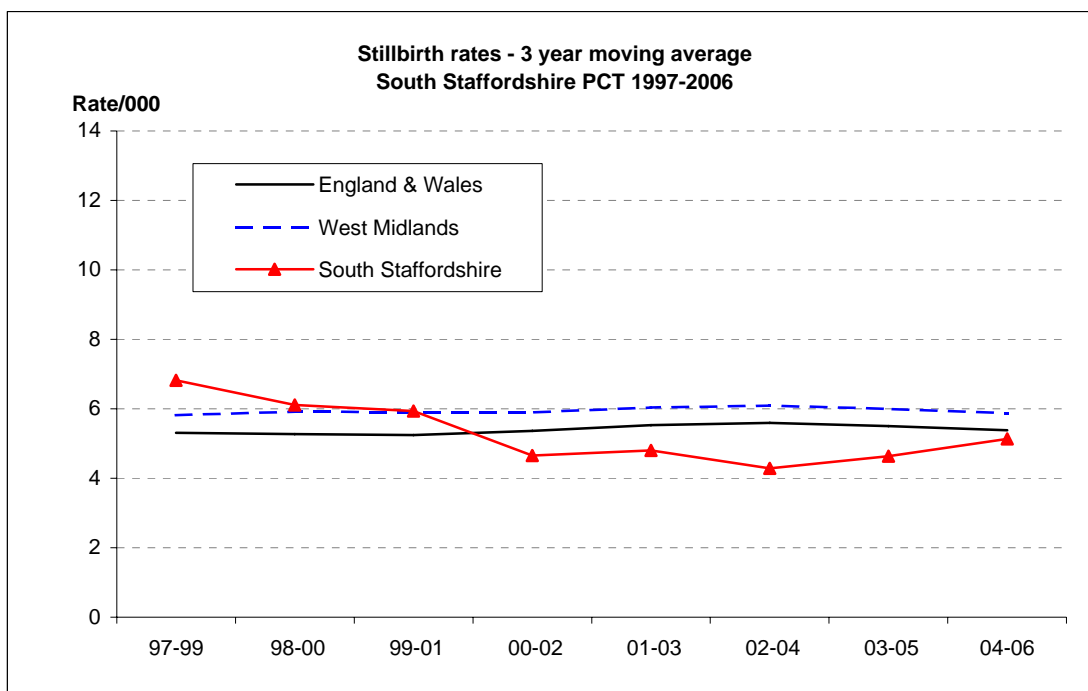
	2002	2003	2004	2005	2006
England & Wales	5.6	5.7	5.5	5.4	5.3
West Midlands	6.2	6.0	5.5	5.9	5.6
South Staffordshire	4.9	4.0	3.9	5.7	5.5

Stillbirth rates - PDN (England & Wales - ONS)

	1997	1998	1999	2000	2001	2002	2003	2004	2005	2006
England & Wales	5.3	5.3	5.3	5.2	5.3	5.6	5.7	5.5	5.4	5.3
West Midlands	5.5	5.6	6.4	5.7	5.6	6.4	6.1	5.8	6.1	5.7
South Staffordshire	6.0	6.3	8.3	3.7	5.7	4.5	4.1	4.2	5.6	5.6

Stillbirth rates - 3 year moving average - PDN (England & Wales - ONS)

	97-99	98-00	99-01	00-02	01-03	02-04	03-05	04-06
England & Wales	5.3	5.3	5.2	5.4	5.5	5.6	5.5	5.4
West Midlands	5.8	5.9	5.9	5.9	6.0	6.1	6.0	5.9
South Staffordshire	6.8	6.1	5.9	4.7	4.8	4.3	4.6	5.1



Note

1 Prior to 2002, PCT areas have been back-projected using postcodes (PDN)

Page 5 Early Neonatal Death Rates in South Staffordshire PCT, 1997-2006

Early neonatal death rates - ONS

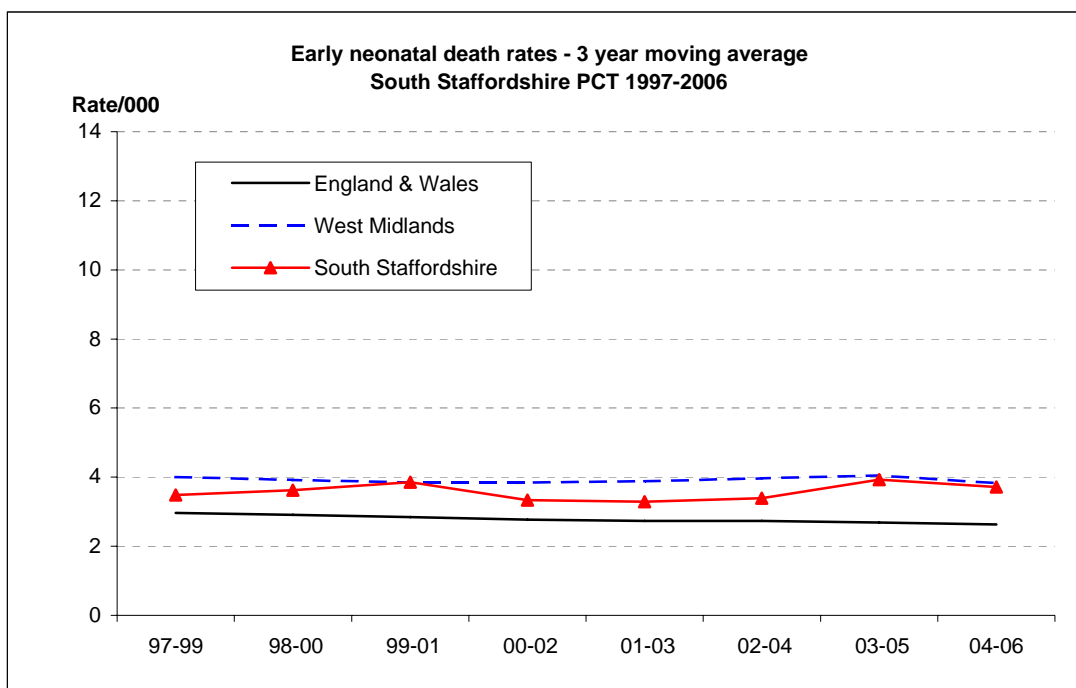
	2002	2003	2004	2005	2006
England & Wales	2.7	2.8	2.7	2.6	2.6
West Midlands	3.9	4.1	3.9	4.0	3.6
South Staffordshire	2.4	4.5	3.1	3.9	3.8

Early neonatal death rates - PDN (England & Wales - ONS)

	1997	1998	1999	2000	2001	2002	2003	2004	2005	2006
England & Wales	3.1	2.9	2.9	2.9	2.7	2.7	2.8	2.7	2.6	2.6
West Midlands	4.3	3.8	3.8	4.1	3.6	3.8	4.2	3.9	4.1	3.5
South Staffordshire	4.0	2.5	3.9	4.5	3.1	2.4	4.3	3.4	4.1	3.7

Early neonatal death rates - 3 year moving average - PDN (England & Wales - ONS)

	97-99	98-00	99-01	00-02	01-03	02-04	03-05	04-06
England & Wales	3.0	2.9	2.8	2.8	2.7	2.7	2.7	2.6
West Midlands	4.0	3.9	3.8	3.8	3.9	4.0	4.0	3.8
South Staffordshire	3.5	3.6	3.9	3.3	3.3	3.4	3.9	3.7



Note

1 Prior to 2002, PCT areas have been back-projected using postcodes (PDN)