



Crystal Court, Aston Cross  
Birmingham, B6 5RQ

Telephone 0121 687 3400  
Facsimile 0121 687 3401  
E-mail: office@pi.nhs.uk  
Website: www.pi.nhs.uk

07 November 2007

### **Perinatal and Infant Mortality Rates - 2006 Update**

The enclosed document provides the latest update of the perinatal & infant mortality rates for England & Wales, West Midlands and your PCT:

#### **Shropshire County PCT**

Where the PCT boundary is new, we also include the former constituent PCTs.

The information is derived from

- VSOB data for 2006 from ONS
- Denominator data from ONS
- Data from our Perinatal Death Notifications (PDN) collected regionally. PDN rates can be slightly different due to our ongoing process of ascertainment, and have undergone additional checks on geographical boundaries, postmortems etc.

The analysis includes yearly rates and three-year moving averages, and is summarised for stillbirths, early neonatal deaths and perinatal and infant mortality. This report is also accessible on [www.pi.nhs.uk/pnm/](http://www.pi.nhs.uk/pnm/).

With sincere regards,

A handwritten signature in black ink, appearing to read 'Jason Gardosi', with a long horizontal stroke extending to the right.

Professor Jason Gardosi  
Director, Perinatal Institute

**Page 2 Perinatal Death Rates in Shropshire PCT, 1997-2006**

Perinatal death rates - ONS

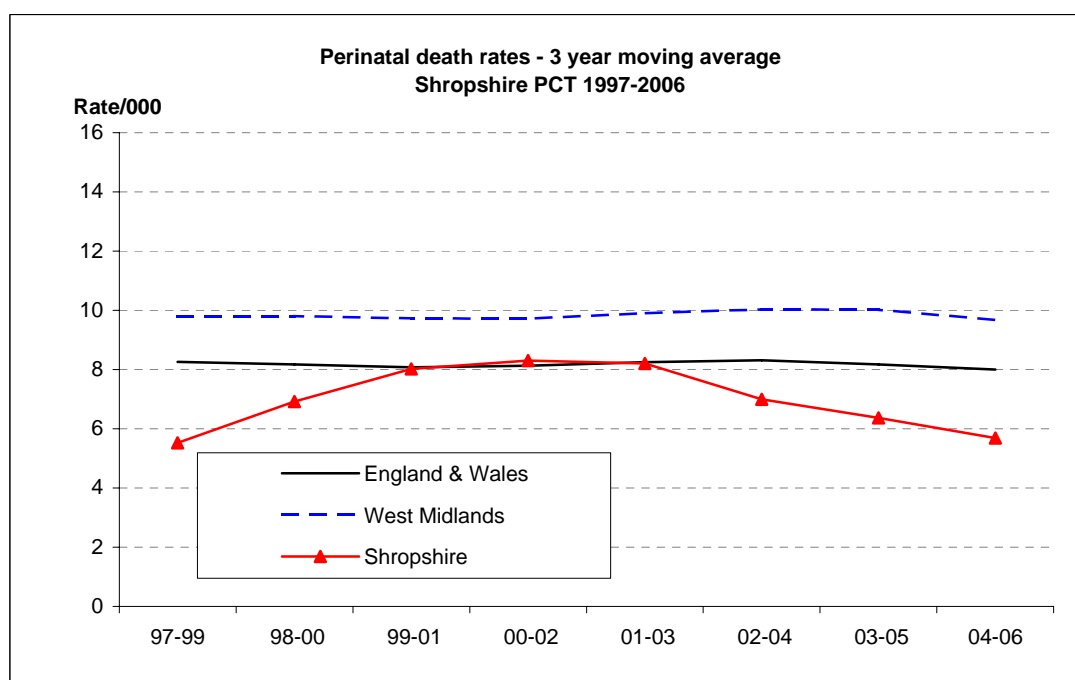
	2002	2003	2004	2005	2006
England & Wales	8.3	8.5	8.1	7.9	7.9
West Midlands	10.1	10.1	9.5	9.9	9.2
<b>Shropshire</b>	7.6	8.4	5.4	4.3	7.2

Perinatal death rates - PDN (England & Wales - ONS)

	1997	1998	1999	2000	2001	2002	2003	2004	2005	2006
England & Wales	8.4	8.2	8.2	8.1	7.9	8.3	8.5	8.1	7.9	7.9
West Midlands	9.8	9.5	10.2	9.8	9.2	10.2	10.3	9.6	10.1	9.3
<b>Shropshire</b>	5.2	5.8	5.6	9.5	9.2	6.2	9.2	5.5	4.4	7.2

Perinatal death rates - 3 year moving average - PDN (England & Wales - ONS)

	97-99	98-00	99-01	00-02	01-03	02-04	03-05	04-06
England & Wales	8.3	8.2	8.1	8.1	8.2	8.3	8.2	8.0
West Midlands	9.8	9.8	9.7	9.7	9.9	10.0	10.0	9.7
<b>Shropshire</b>	5.5	6.9	8.0	8.3	8.2	7.0	6.4	5.7



**Note**

1 Prior to 2002, PCT areas have been back-projected using postcodes (PDN)

**Page 3 Infant Death Rates in Shropshire PCT, 1997-2006**

Infant death rates - ONS

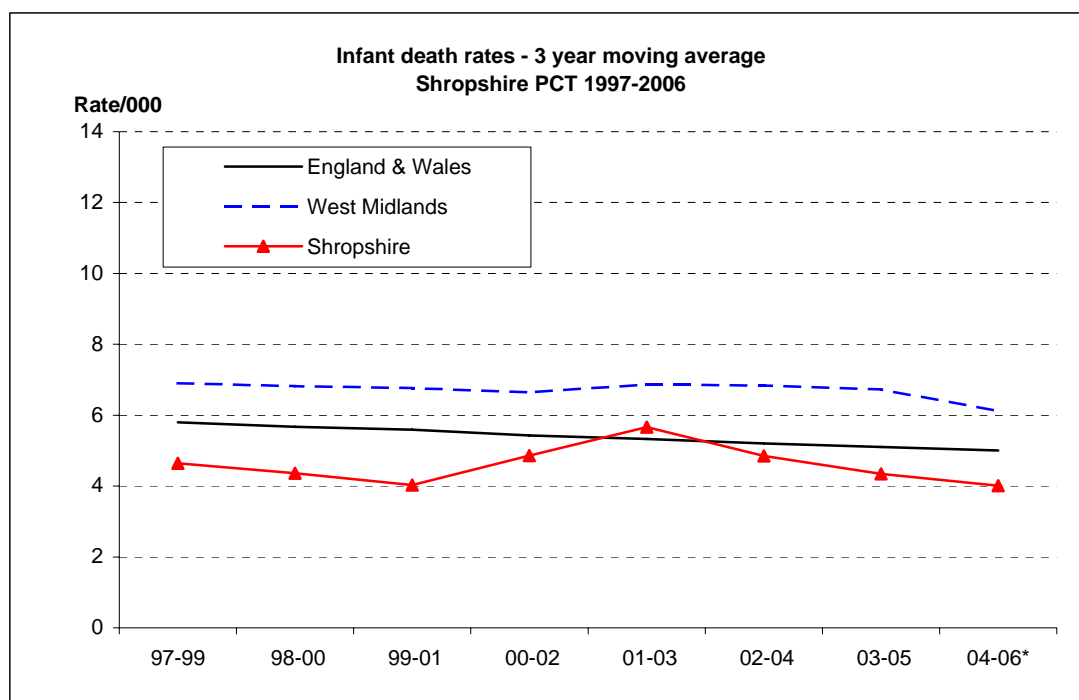
	2002	2003	2004	2005	2006
England & Wales	5.3	5.3	5.1	5.0	5.0
West Midlands	6.5	7.3	6.8	6.4	6.4
Shropshire	6.2	6.3	3.6	4.0	4.7

Infant death rates - PDN (England & Wales - ONS)

	1997	1998	1999	2000	2001	2002	2003	2004	2005	2006*
England & Wales	6.0	5.7	5.8	5.6	5.4	5.3	5.3	5.1	5.0	5.0
West Midlands	7.1	6.6	7.0	6.8	6.4	6.7	7.5	6.4	6.4	5.6
Shropshire	4.9	5.9	3.1	4.1	5.0	5.5	6.4	2.6	4.0	5.4

Infant death rates - 3 year moving average - PDN (England & Wales - ONS)

	97-99	98-00	99-01	00-02	01-03	02-04	03-05	04-06*
England & Wales	5.8	5.7	5.6	5.4	5.3	5.2	5.1	5.0
West Midlands	6.9	6.8	6.8	6.6	6.9	6.8	6.7	6.1
Shropshire	4.6	4.4	4.0	4.9	5.7	4.8	4.3	4.0



**Notes**

- 1 \* Post neonatal (and therefore infant) deaths are not necessarily complete for 2006
- 2 Prior to 2002, PCT areas have been back-projected using postcodes (PDN)

**Page 4 Stillbirth Rates in Shropshire PCT, 1997-2006**

Stillbirth rates - ONS

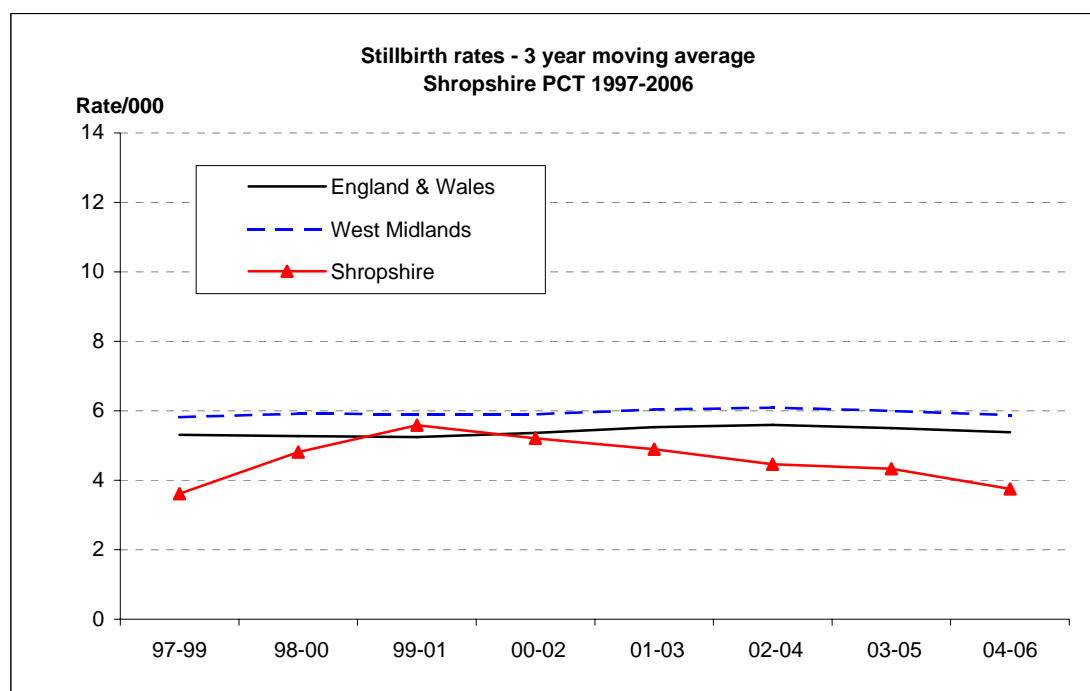
	2002	2003	2004	2005	2006
England & Wales	5.6	5.7	5.5	5.4	5.3
West Midlands	6.2	6.0	5.5	5.9	5.6
Shropshire	3.3	5.3	4.0	2.5	4.7

Stillbirth rates - PDN (England & Wales - ONS)

	1997	1998	1999	2000	2001	2002	2003	2004	2005	2006
England & Wales	5.3	5.3	5.3	5.2	5.3	5.6	5.7	5.5	5.4	5.3
West Midlands	5.5	5.6	6.4	5.7	5.6	6.4	6.1	5.8	6.1	5.7
Shropshire	3.3	3.4	4.2	7.0	5.7	2.9	6.0	4.4	2.5	4.3

Stillbirth rates - 3 year moving average - PDN (England & Wales - ONS)

	97-99	98-00	99-01	00-02	01-03	02-04	03-05	04-06
England & Wales	5.3	5.3	5.2	5.4	5.5	5.6	5.5	5.4
West Midlands	5.8	5.9	5.9	5.9	6.0	6.1	6.0	5.9
Shropshire	3.6	4.8	5.6	5.2	4.9	4.5	4.3	3.8



**Note**

1 Prior to 2002, PCT areas have been back-projected using postcodes (PDN)

**Page 5 Early Neonatal Death Rates in Shropshire PCT, 1997-2006**

Early neonatal death rates - ONS

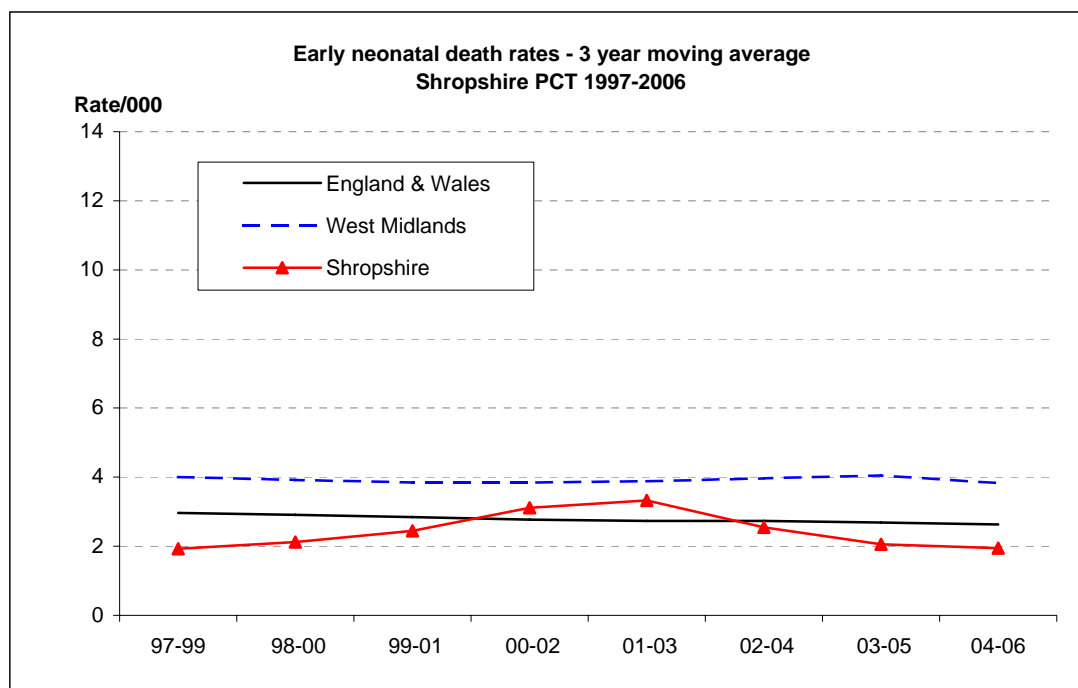
	2002	2003	2004	2005	2006
England & Wales	2.7	2.8	2.7	2.6	2.6
West Midlands	3.9	4.1	3.9	4.0	3.6
Shropshire	4.4	3.2	1.5	1.8	2.5

Early neonatal death rates - PDN (England & Wales - ONS)

	1997	1998	1999	2000	2001	2002	2003	2004	2005	2006
England & Wales	3.1	2.9	2.9	2.9	2.7	2.7	2.8	2.7	2.6	2.6
West Midlands	4.3	3.8	3.8	4.1	3.6	3.8	4.2	3.9	4.1	3.5
Shropshire	2.0	2.4	1.4	2.6	3.5	3.3	3.2	1.1	1.8	2.9

Early neonatal death rates - 3 year moving average - PDN (England & Wales - ONS)

	97-99	98-00	99-01	00-02	01-03	02-04	03-05	04-06
England & Wales	3.0	2.9	2.8	2.8	2.7	2.7	2.7	2.6
West Midlands	4.0	3.9	3.8	3.8	3.9	4.0	4.0	3.8
Shropshire	1.9	2.1	2.4	3.1	3.3	2.5	2.1	1.9



**Note**

1 Prior to 2002, PCT areas have been back-projected using postcodes (PDN)